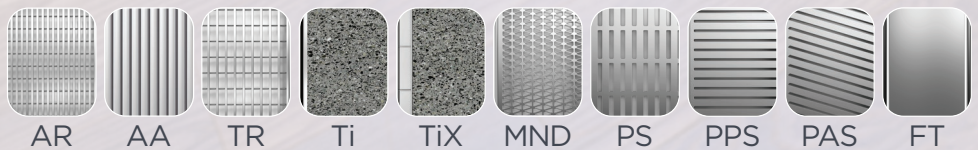


MADE TO LENGTH

LINEAR DRAINAGE



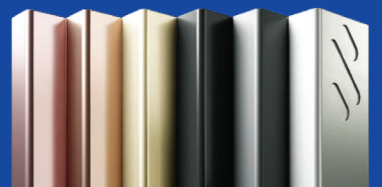
- + Fully finished drainage units, ready for installation with no assembly required.
- + 100mm, 65mm + 38mm grates.
- + Rapid 3 - 5 Day Manufacture.
- + Custom outlet size and position.
- + Easy and hassle free product configuration with our online configurator.



Stormtech®



Choose your design + finish



THE MTL SERIES

Linear Drainage Supplied To Suit Your Project Needs.

Stormtech Made-to-Length

The MTL series are made to specific lengths with a customised outlet position, along the drain. These are fully finished stainless steel linear drainage units, with the option of either our 316 stainless steel or aluminium grate designs for our wave grate design.

Our MTL series are ready for installation with no assembly required.



100 RANGE - 107mm x 16mm Available DN sizes: DN40, DN50, DN65, DN80 + DN100



100 RANGE - 106mm x 23mm Available DN sizes: DN40, DN50, DN65, DN80 + DN100



100 RANGE - 106mm x 42mm Available DN sizes: DN40, DN50, DN65, DN80 + DN100



65 RANGE - 72mm x 42mm Available DN sizes: DN40, DN50 + DN65



65 RANGE - 72mm x 27mm Available DN sizes: DN40, DN50 + DN65



100 RANGE 107mm x 31mm



38 RANGE 46mm x 42mm Available in DN40



38PSi40MTL Punched Slot



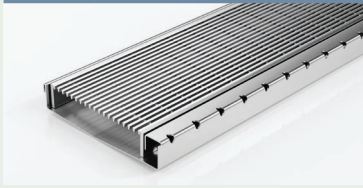
65 RANGE 74mm x 31mm Available in DN40, DN50, DN65



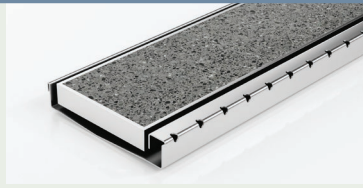
65Ti30MTL Tile Insert Tiles up to 12mm

*Shower Screen Support images published without supplied welded end cap. ^ SCS range has longer lead times.

SHOWER SCREEN SUPPORT - 120mm x 24mm Available DN sizes: DN100



120SCSARiMTL
Premium Grate



120SCSTiiMTL
Standard Tile Insert
Tiles up to 10mm



120SCSMNDiMTL
Marc Newson Design



120SCSPSiMTL
Punched Slot Design



120SCSPPSiMTL
Punched Perpendicular
Slot Design



120SCSPASiMTL
Punched Angle
Slot Design

125mm x 24mm



120SCSTRiMTL
Standard Grate

FINISHES +
COLOURS



STAINLESS STEEL
| ALUMINIUM



BLACK



BRASS GOLD
Only available for Wave Grate.



GUNMETAL GREY



BRONZE



COPPER



BRASS

BENEFITS

- + Australian Standards Compliant.
- + Good Design 2023 Winner.
- + 100% Australian Made.
- + Fully finished ready to install, no assembly required.



SCAN ME

Visit stormtech.com.au for detailed assembly and installation information or scan QR code.



DISTRIBUTORS & STOCKISTS

- + To find a distributor near you, please visit our website or call our office.

TECHNICAL INFORMATION

- + We provide product information & CAD files for download from our website.

MARINE CODE
316
STAINLESS
STEEL

Stormtech Pty Ltd 22 Norfolk Avenue, South Nowra, NSW 2541 Australia | Phone 1300 653 403 | Email info@stormtech.com.au

