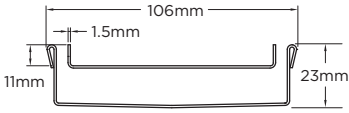


Order and Quote Form

# Made-to-Length Tile Insert Drain › Multiple Outlet

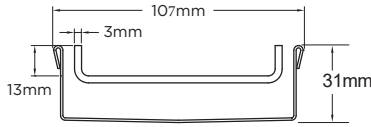


## Tray Profiles 100 Range



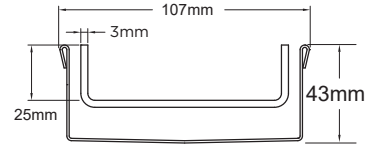
**Profile 1**

Suits tiles up to 10mm thick  
100Tii20MTL



**Profile 2**

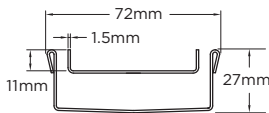
Suits tiles up to 12mm thick  
100Tii30MTL



**Profile 3**

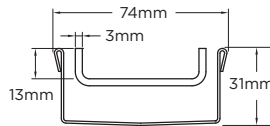
Suits tiles up to 25mm thick  
100Tii40MTL

## 65 Range



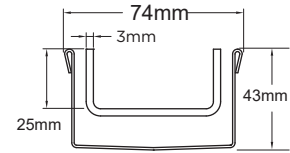
**Profile 4**

Suits tiles up to 10mm thick  
65Tii25MTL



**Profile 5**

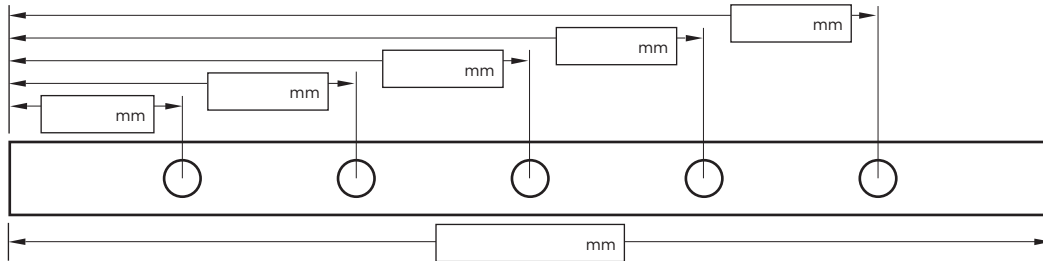
Suits tiles up to 12mm thick  
65Tii30MTL



**Profile 6**

Suits tiles up to 25mm thick  
65Tii40MTL

## Specify Length, Outlet Positions/Size and Profile Required



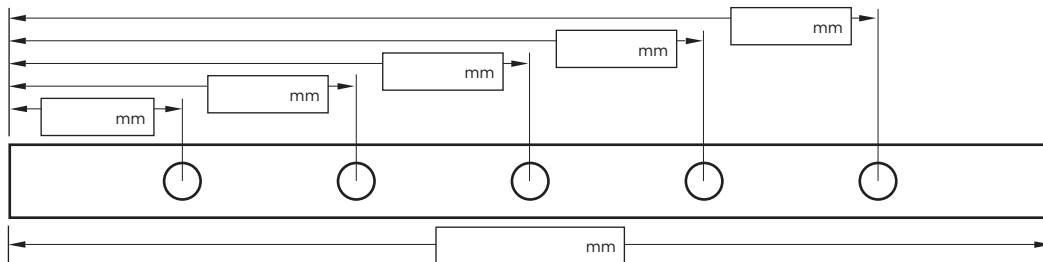
**Drain 1**

**Profile Required**

- 1  2  3  4  5  6

**Outlet Size**

- 38mm  44mm  51mm  
 63mm  76mm  89mm



**Drain 2**

**Profile Required**

- 1  2  3  4  5  6

**Outlet Size**

- 38mm  44mm  51mm  
 63mm  76mm  89mm

**NOTE:** See AS3500 standard & local regulator for specific outlet/drain requirements. Outlet Size must be smaller than selected Range. MND, PAS and PPS grate styles not available with Profiles 2 or 4. Stainless Steel Grade is 316 unless specified. Made-to-Length (MTL) minimum charge of 800mm. Tile Inserts longer than 1200mm supplied in multiple sections. Channels over 3000mm are supplied in multiple sections with joiner. Orders received after 11am are processed next working day. +/- 2mm tolerance on dimensions.

**Full Name**

**Email Address**

**Company Name**

**Order Number**

**Stormtech Quote Number**

**Telephone**

**Signature**