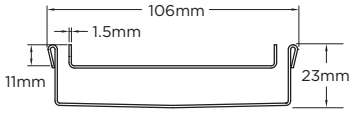




Order and Quote Form

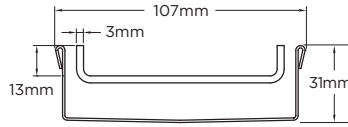
Made-to-Length Tile Insert Drain

Tray Profiles 100 Range



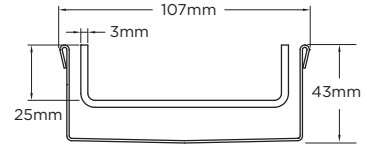
Profile 1

Suits tiles up to 10mm thick
100Tii20MTL



Profile 2

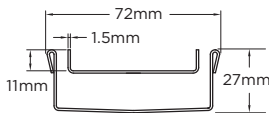
Suits tiles up to 12mm thick
100Tii30MTL



Profile 3

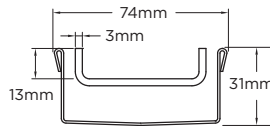
Suits tiles up to 25mm thick
100Tii40MTL

65 Range



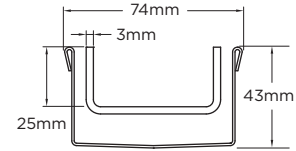
Profile 4

Suits tiles up to 10mm thick
65Tii25MTL



Profile 5

Suits tiles up to 12mm thick
65Tii30MTL

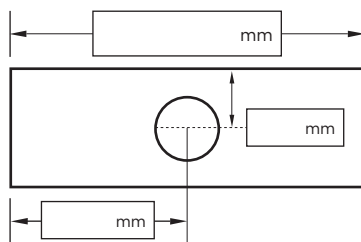


Profile 6

Suits tiles up to 25mm thick
65Tii40MTL

Specify Size, Outlet and Profile Required

Drain 1



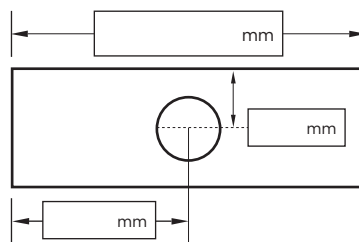
Profile Required

- 1 2 3
 4 5 6

Outlet Size

- 38mm 44mm 51mm
 63mm 76mm 89mm

Drain 2



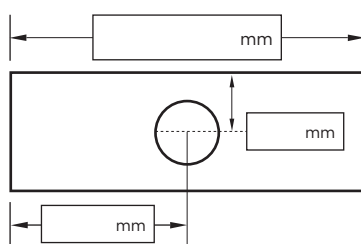
Profile Required

- 1 2 3
 4 5 6

Outlet Size

- 38mm 44mm 51mm
 63mm 76mm 89mm

Drain 3



Profile Required

- 1 2 3
 4 5 6

Outlet Size

- 38mm 44mm 51mm
 63mm 76mm 89mm

Please Note

Fast 3 day dispatch: Up to 9000mm total. Maximum 3 outlets total across all drains.
 Fast 5 day dispatch: Up to 15000mm total. Maximum 5 outlets total across all drains.
 If ordering additional items on the same purchase order, please refer to quote or contact Stormtech for your lead time, as the fast 3/5 day dispatch may not apply.
 See AS3500 standard & local regulator for specific outlet/drain requirements.
 Outlet Size must be smaller than selected Range's width.
 MND grate style not available with Profiles 2 or 4.
 Made-to-Length (MTL) minimum charge of 800mm.
 Inserts longer than 1200mm are supplied in multiple sections. Channels are maximum 3000mm in one piece, channels over 3000mm supplied in multiple sections with joiner.
 Orders received after 11am are processed as next working day.
 Stainless Steel Grade is 316 unless specified. +/- 2mm tolerance on dimensions.

Full Name

Company Name

Telephone

Email Address

Order Number

Stormtech Quote Number

Signature